

# servomold®

*Cool motion*



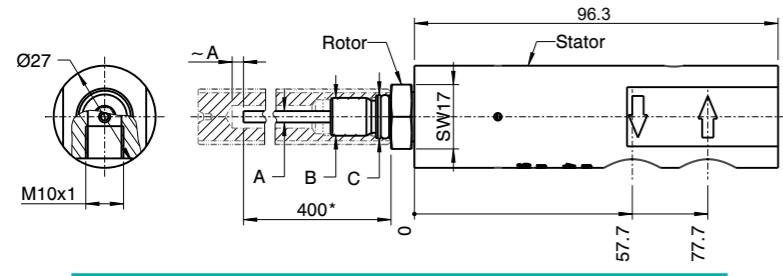
## SDD - Rotary cooling with mechanical seal

For rotating cores

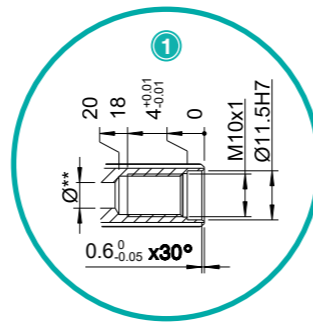
Adaptable cooling solution / Temperatures up to 90 °C - Pressure up to 4 bar  
Cooling pipe Ø3, Ø4 and Ø6 mm / Different connection options available



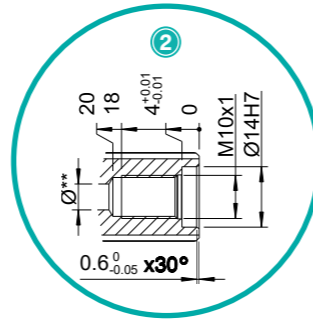
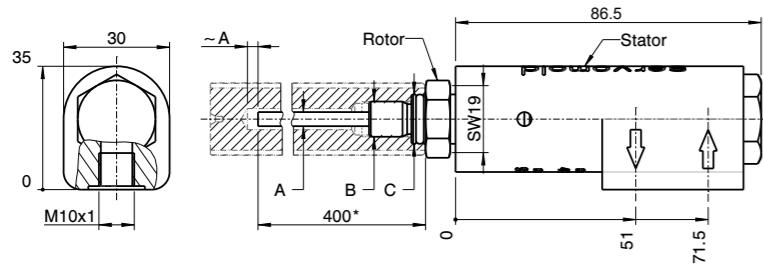
SDD-27



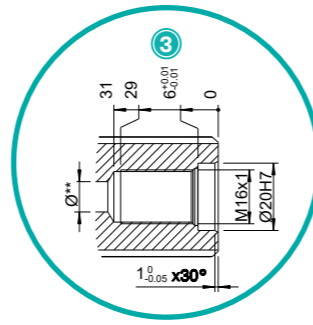
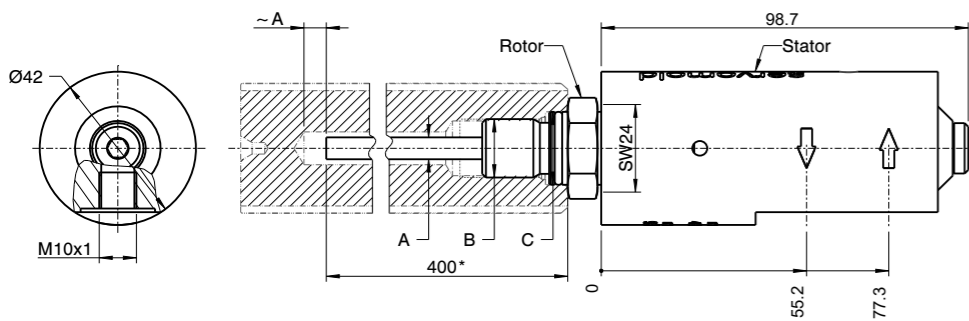
Connection details (thread core)



SDD-30



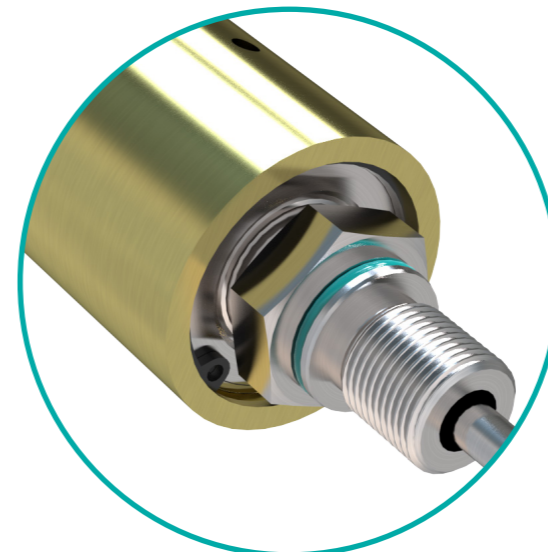
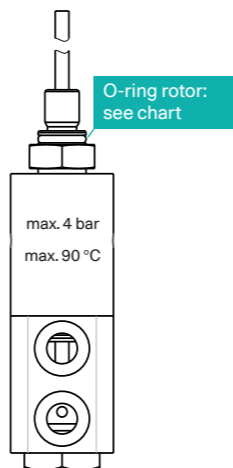
SDD-42



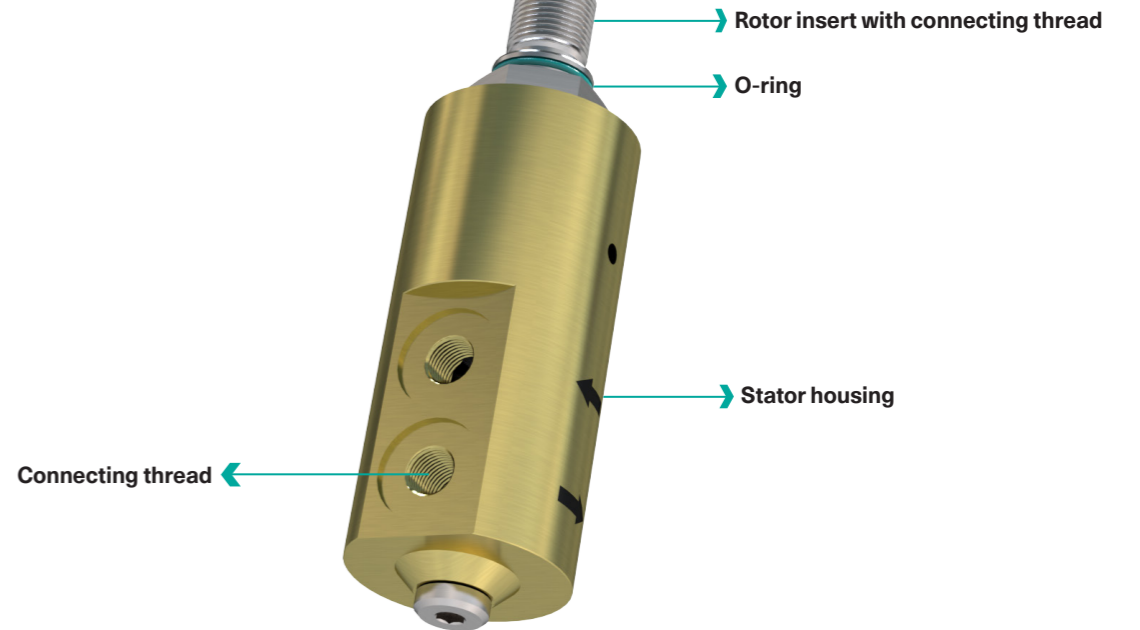
\*Standard length

\*\*Select diameter for optimum flow depending on cooling tube diameter.

		① SDD-27	② SDD-30	③ SDD-42
Connection detail	C	radial sealing Ø11,5 H7/g6	radial sealing Ø14 H7/g6	radial sealing Ø20 H7/g6
Standard pipe Ø (mm)	A	Ø3	Ø4	Ø6
Connecting thread rotor	B	M 10x1	M 10x1	M 16x1
O-ring Ø rotor	-	Ø8x2	Ø10,5x2	Ø16x2



Connection details (Thread with O-ring)



Environmental conditions	
Coolant	water
Coolant temperature	max. 90 °C
Pressure	max. 4 bar

- ⚠ Do not run dry!
- ⚠ Please make sure to use clean, filtrated water!
- ⚠ Check O-ring regularly!
- ⚠ Rotor tightening torque 10 Nm!
- ⚠ Use medium-strength threadlocker for rotor!

Sample order no.: SDD-42 (system size)

# Example of installation

