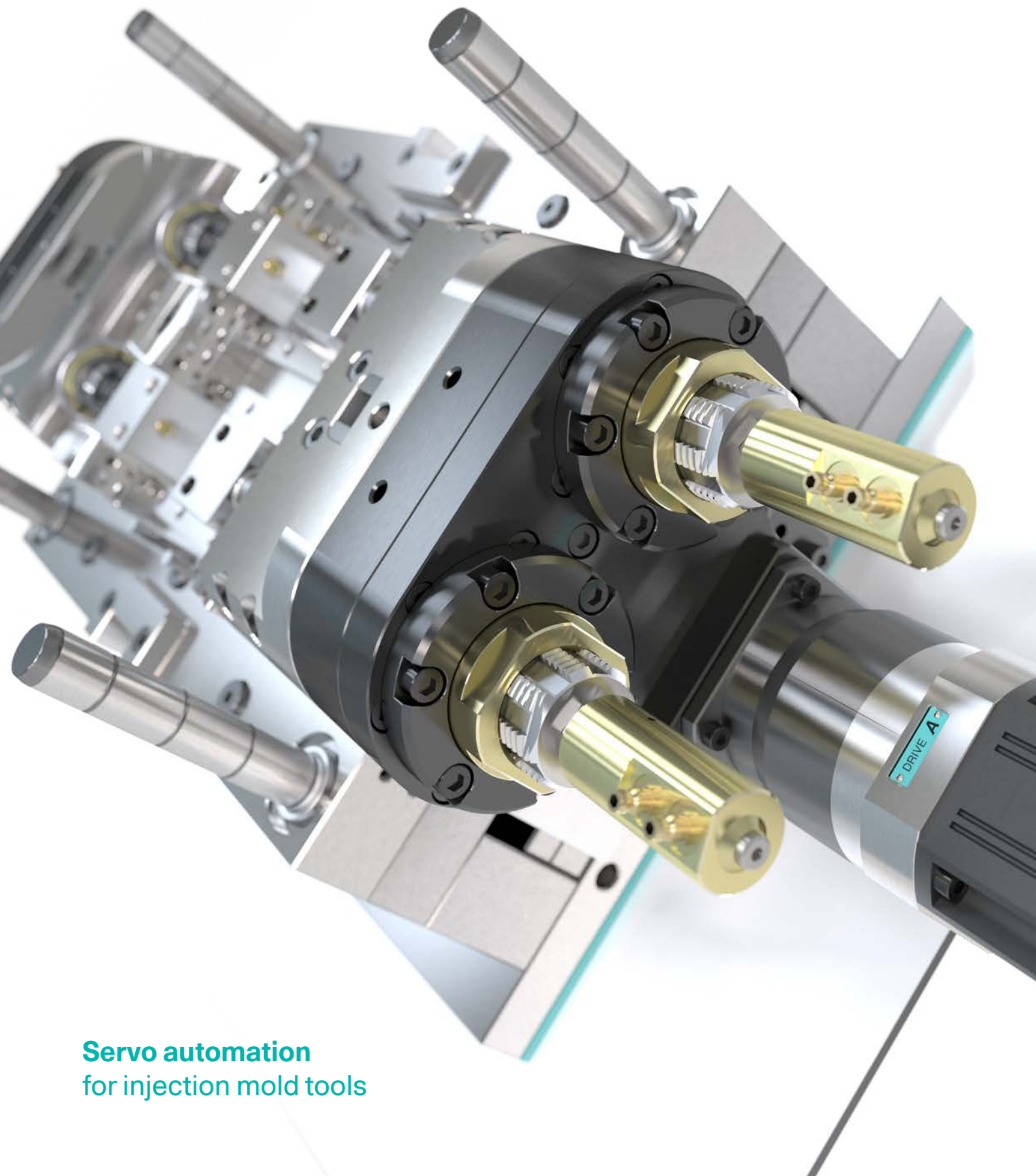


# servomold®



**Servo automation**  
for injection mold tools

# The motion

## How to get an industry moving

Servo technologies offer countless possibilities, especially for injection moldmaking, for automating rotational and linear movements precisely and with pinpoint accuracy. Corresponding applications convince with highest process and mold safety and offer significant energy savings compared to hydraulic and pneumatic systems.

To realize this potential, Servomold combines the experience of more than 20 years of moldmaking and automation - and uses the resulting synergies to create a clean and efficient standard for the automation of injection mold tools. As a consultant, designer and supplier, we stand for reliable components specifically adapted to the requirements of injection molding processes and fully integrated system solutions. This expertise is shown in more than 1100 servo systems we have implemented for customers around the world since 2012.



*Bianca and Thomas Meister, Management*



# Servo technology inspires

## with every movement

*Oil-free, clean, environmentally friendly. Servomold servo technology is the ideal complement.*

John Erwes, Erwes Reifenberg



Modern injection moldmaking has discovered the advantages of servo technology for itself and benefits greatly from the wide range of possible applications. Servo creates the perfect conditions to meet the requirements of global industries for minimum cycle times, highest availability as well as extensive process control and traceability. In addition to aviation, automotive, medical and pharma, these include industries such as fastening and con-

struction, as well as furniture, consumer goods and packaging. Especially when using all-electric injection molding machines, the desire for oil-free, clean and environmentally friendly solutions is in the foreground - here, servo components are the ideal complement to achieve clean operating conditions and to individually design efficient, high-precision processes.

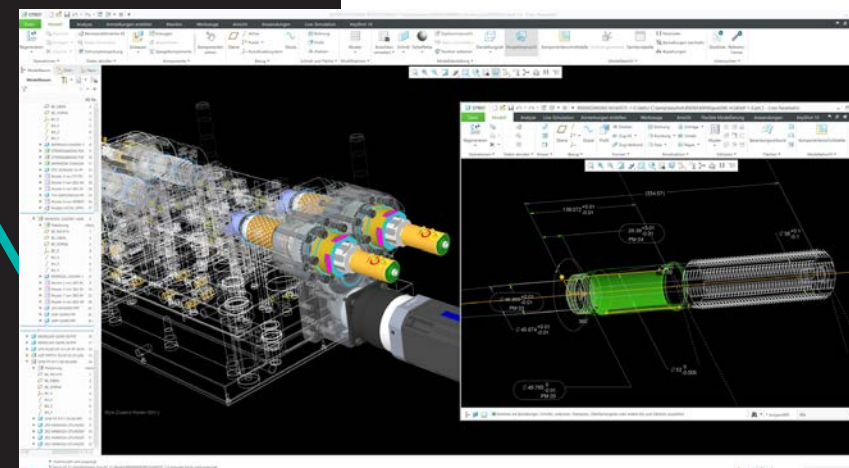
# Process safety and performance

The integration of servo drives in injection mold tools requires in-depth knowledge in both moldmaking and automation. The numerous influencing parameters of both worlds presuppose extensive planning and require the calculation of process forces as well as rotational and inertial torques, taking into account relevant process parameters.

The design and service life calculation of gearboxes, bearing elements and gearing components by software is the reliable base for our designs. Added to this are tolerance analysis, material selection and evaluation, and extensive risk analyses. When designing sophisticated servo systems, we leave nothing to chance - this is precisely where our know-how and strength lie.



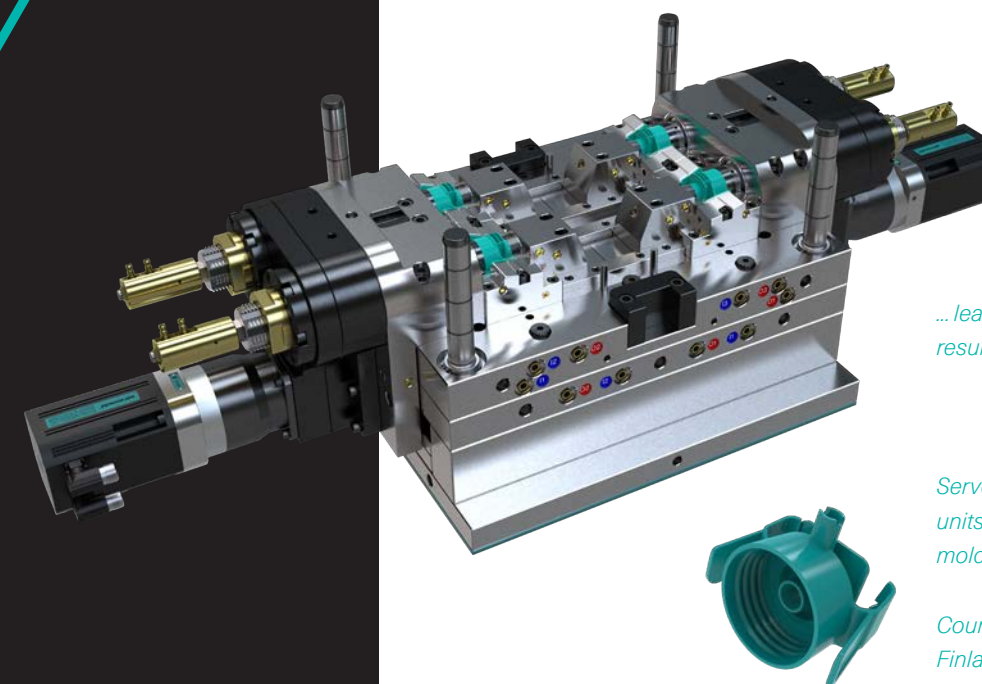
*The ability to think out of the box...*



*...and yet concentrate on the essentials...*

## Technical partner with foresight

We are your reliable partner, not a service provider - which is why we keep an eye on the big picture and deal intensively with your mold and the entire process chain. Experienced project managers and design engineers support the cooperation from the beginning as personal contacts and lead your project to a successful completion.



*...leads to extraordinary results.*

*Servomold double unscrewing units on fourfold unscrewing mold*

*Courtesy of Sartorius Finland.*



# You set the requirements,

# we deliver the complete solution.

## › Customized, standardized

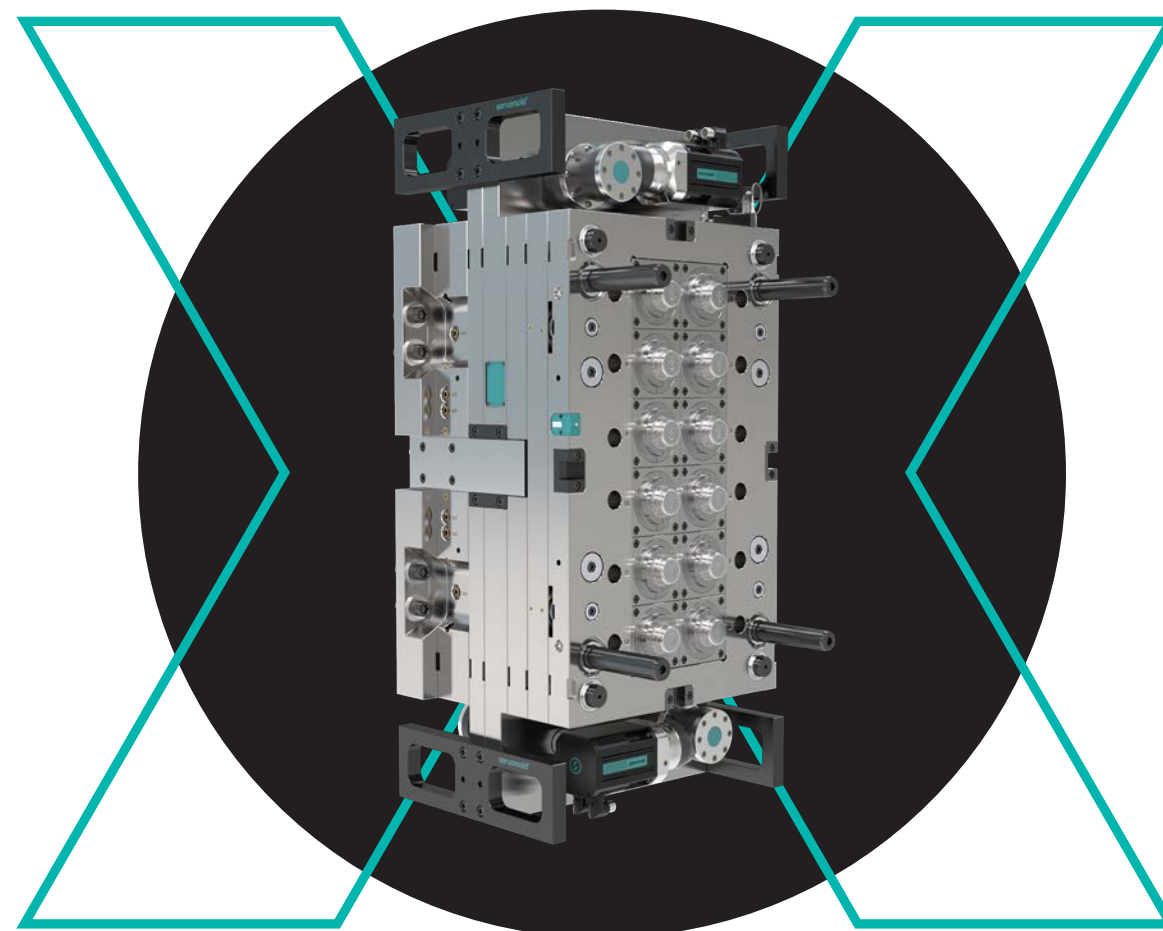
Rotational and linear movements take place in your injection mold tools, which can be ideally implemented using servo motors. We offer an individual solution for every standard process.

## › Clean, low-maintenance operation

Servomold systems offer a quiet, durable, and nearly maintenance-free replacement to, for example, hydraulic systems - under cleanroom conditions.

## › Time-saving and pinpoint

Modern production requires solutions that lose nothing in terms of precision and repeatability with the shortest cycle times. With us, you achieve maximum efficiency.



Unscrewing halves

## › Concept, calculation and design

You tell us your specifications, and together we create a concept that is optimally tailored to your application - including calculation of the longevity and functional guarantee as well as the individual production of the design data.

## › Manufacturing and assembly in-house

We manufacture your system in-house up to the complete unscrewing half. The production of individual components complements our system of modular standard parts.

## › Ready-to-use system solution

Servomold systems are delivered ready for installation and fit precisely into your injection mold tools. Configuration and commissioning are done by us on site.

## Modular Servomold system components



Threaded core systems

Rotary unit for indexing plates

Unscrewing devices

Drive units

Linear actuators

# Function meets intuition



## Management, monitoring, evaluation and 100 % control at all times.

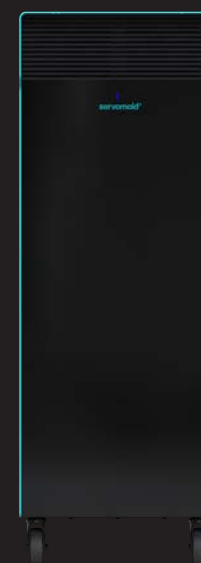
The SMC panel offers a clear overview of all operating states, oscilloscope functions and simple adjustment of process parameters in live operation on its touchscreen user interface. The configurable RFID user management allows individual adaptation to your safety requirements and simplifies the monitoring of changes and optimizations.

# Servo MoldControl

## In use in over 1100 applications worldwide.

The hardware and software specially developed by Servomold for controlling our servo motors is a compact, standardized all-round system with up to 8-fold servo control. Pre-programmed functions, especially for the requirements of injection molding companies, can be used for process adjustment.

A unique technology allows the universal and flexible use of different position encoder systems. Interfaces to all common injection molding machines guarantee smooth integration. All control units are also directivecompliant, CE-tested and equipped with complete safety technology.



### SMC Rack

- Up to 8 drives
- Servo amplifier  
20 A / 45 A / 100 A



### SMC Standard

- Up to 4 drives
- Servo amplifier  
20 A / 45 A / 100 A



### SMC Mini

- 1 drive
- Servo amplifier  
20 A / 45 A



# Ready for your challenge

Extensive technical support for individual adaptations and for integration into your processes is an integral part of our system solutions. Commissioning is carried out by our qualified technicians on site worldwide and supplemented by remote services. With spare parts, maintenance and repair services, we guarantee many years of worry-free operation of our systems and are always available to answer questions by phone and online support.

## › Programming and program adjustments

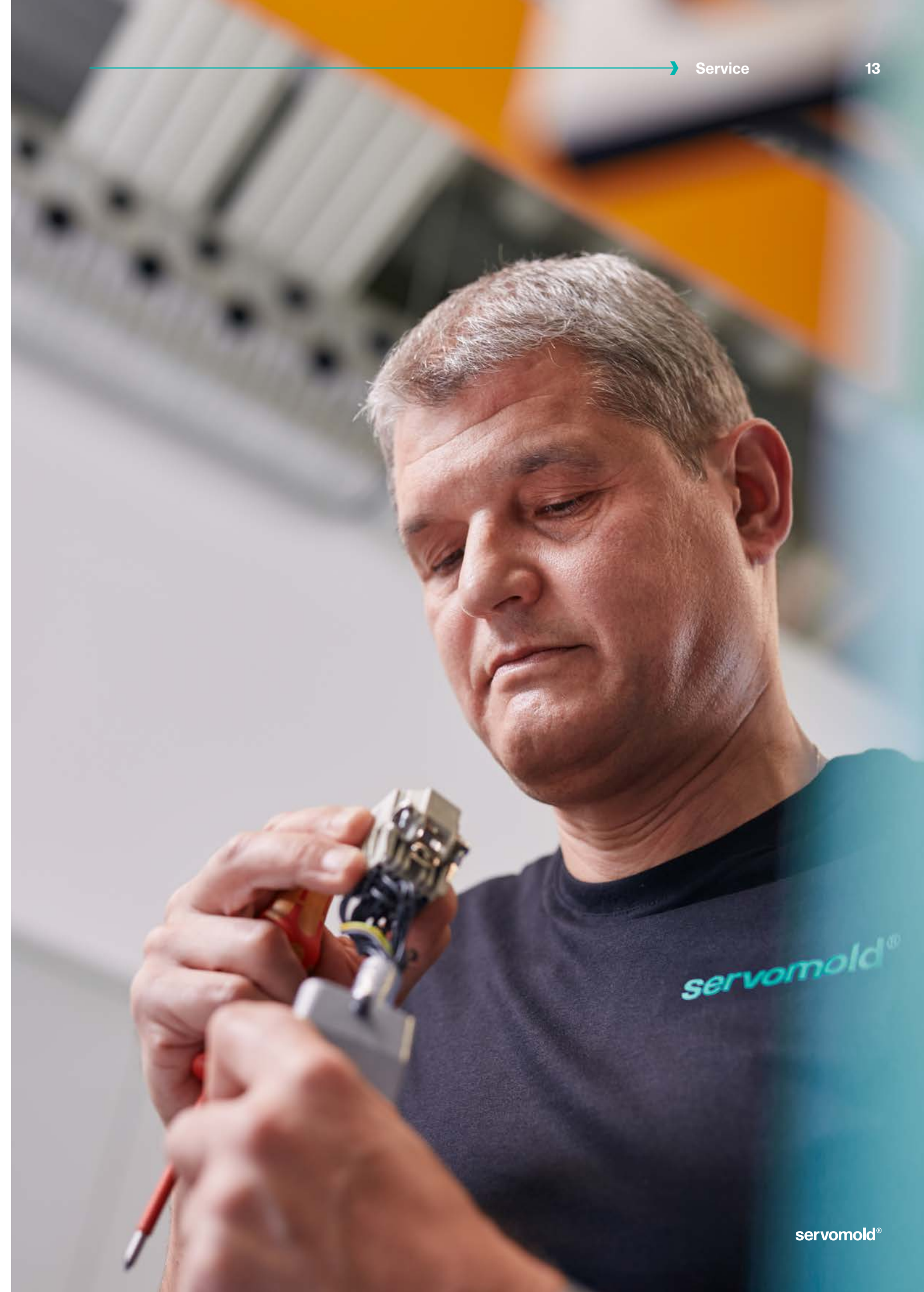
We create a sequence program optimized for your project, including coordination with your process sequence during commissioning. The operation of our control unit is made easy by simple parameterization.

## › Telephone and online support

Injection molding applications are often in operation around the clock. Our support team therefore provides direct and competent assistance in eliminating malfunctions and always answers questions about operation and process optimization as quickly as possible.

## › Commissioning and training

We help to convey and deepen the know-how for the operation of our systems through practice-oriented training. In many cases, this can already take place during commissioning and creates a direct link to practical application.



## WILD & KÜPFER

» At our state-of-the-art facility in Schmerikon, we continuously invest in cutting-edge technology and top performance - that's why we were early adopters and have relied on Servomold technology since then. «

*Daniel Wild, CTO, Wild & Küpfer, Schmerikon – Switzerland*



» We rely on Servomold know-how, servo drives and control units for our high-performance molds in the Caps and Closures area - they are the ideal complement to our 45 years of experience in manufacturing injection mold tools. «

*John Erwes, CEO, Erwes Reifenberg, Finnentrop*



» We are committed to helping our customers increase their production efficiency and implement more sustainable production processes. That is why we have strategically relied on Servomold system components and control units in more than 25 projects since 2014. «

*ppa. Volker Dreher, Head of Process Technology, Braunform, Balingen*



» With Servomold system components, we realize durable, low-maintenance and highly efficient molds. In addition, the professional support of a highly motivated team - for us the main reasons for the long-standing, cooperative partnership. «

*Volker Kiene, Teamlead Project Management Industrialization Molds, Aptar Radolfzell*



» The key factors for us are the ease of operation, safety and individual adaptability of the Servomold control units to our processes. With a unique technology and extensive support, Servomold offers a currently state-of-the-art concept for the use of servo motors in injection mold tools. «

*Thomas Rübsam, Senior Director Technology, Plant Manager Mihla Competence Center Injection Molding, Pharmaceuticals and Devices Division, Fresenius Kabi*

## Röchling

» For us, Servomold is the de facto standard in the servo automation of injection mold tools. Maximum production reliability and performance, sophisticated technology and outstanding service speak for themselves. «

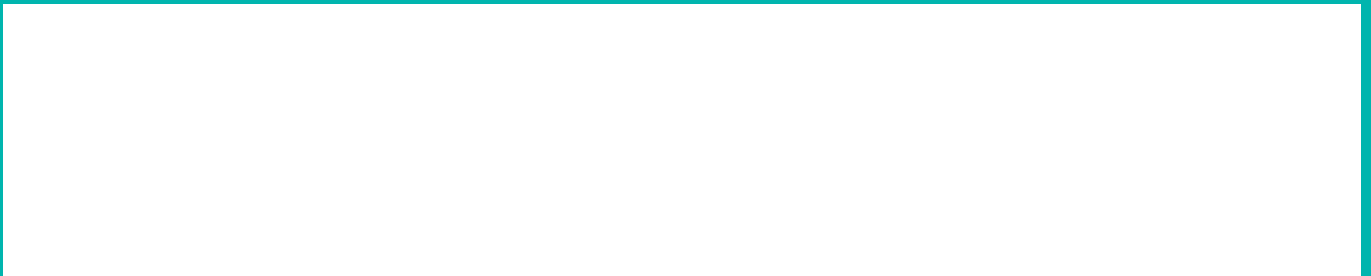
*Christopher Heyd, Manager Tool Shop, Röchling Medical, Brensbach*

# for creation.





Distribution



Servomold GmbH & Co. KG  
Gewerbepark Gräsig 72  
64711 Erbach | Germany



T +49 (0) 6062 80933-0  
E [info@servomold.com](mailto:info@servomold.com)  
W [www.servomold.com](http://www.servomold.com)